


Liezel Eitner

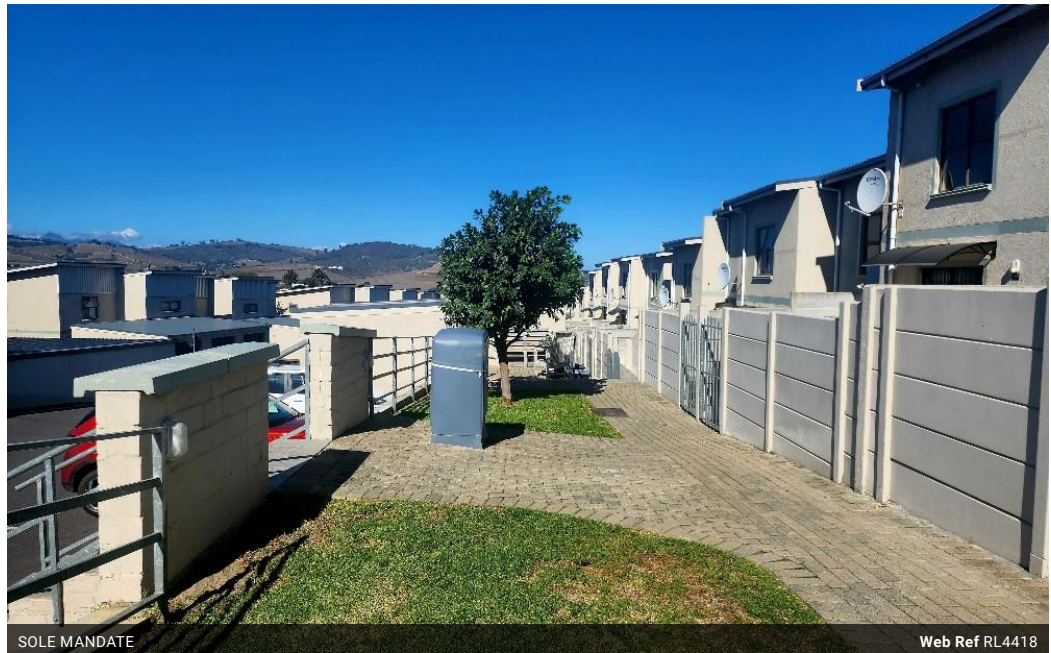
Non-Principal Property Practitioner
Registered with PPRA
(FFC 114 939 0)
079 514 7976

liezel@nspropertysolutions.co.za

Contact NS Property Solutions

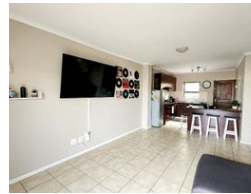
021 987 0220

57 Darwin Road
Kraaifontein
7570



SOLE MANDATE

Web Ref RL4418



R1,399,000

Monthly Bond Repayment R14,679.09

Calculated over 20 years at 11.25% with no deposit.

Transfer Costs R45,997.00 **Bond Costs** R32,064.50

These calculations are only a guide. Please ask your conveyancer for exact calculations.

Monthly Levy R1,300



PET FRIENDLY COMPLEX

This two-bedroom Brackenfell property is ideal for an investment property and comes with a tenant with a lease in place with a rental income of R11 000 pm. This pet friendly Brackenfell property is situated in a complex and offers apart from safety, a two-bedroom duplex with well sized bedrooms and 2 bathrooms.

The open plan lounge leads to a private garden and small courtyard where small pets or kiddies can enjoy the natural sun. The kitchen of this Brackenfell property has ample built-in cupboard space, a fitted built-in stove and a washing machine or dishwasher point.

The automated garage offers safe parking and there is an additional parking bay that comes with this property as well. This duplex is near all amenities and has easy access to the Bottelary Street, etc.

Contact me today and we can schedule a viewing!

Features

Pets Allowed Yes

Interior

Bedrooms	2
Bathrooms	2
Recep. Rooms	1

Exterior

Garages	1
Carports / Parkings	1
Pool	No

Sizes

Floor Size	78m ²
------------	------------------